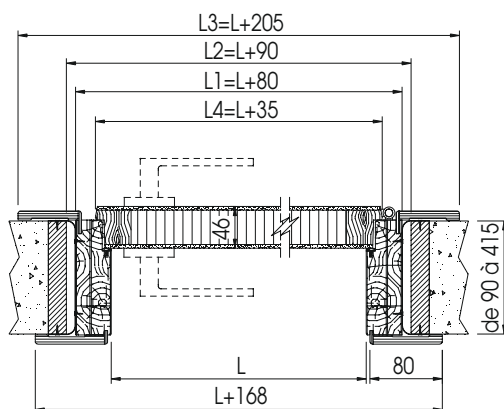
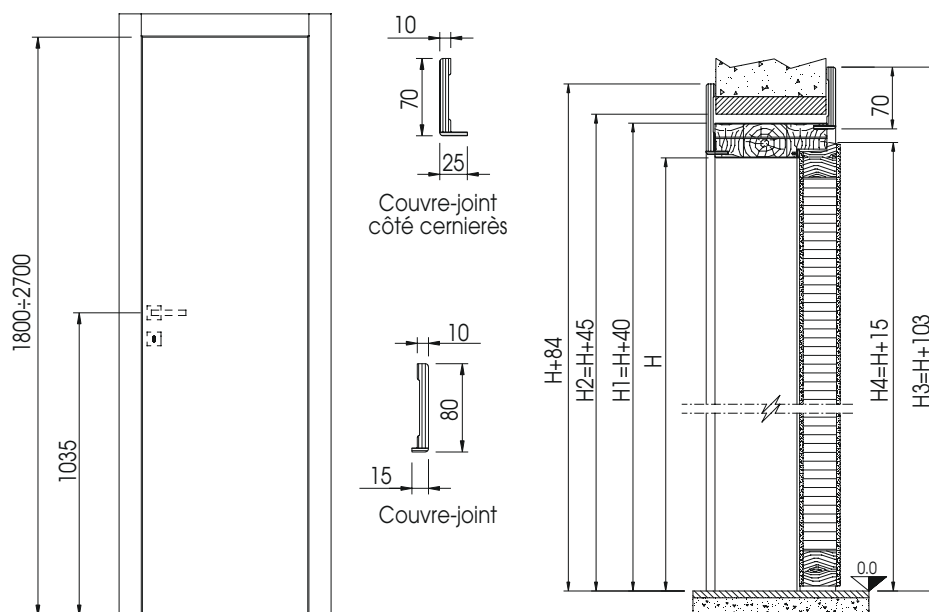
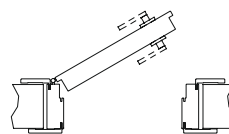


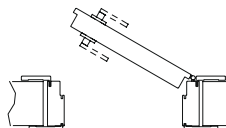
# Trésor battante modèle Pure et Linea



Poussant gauche



Poussant droite



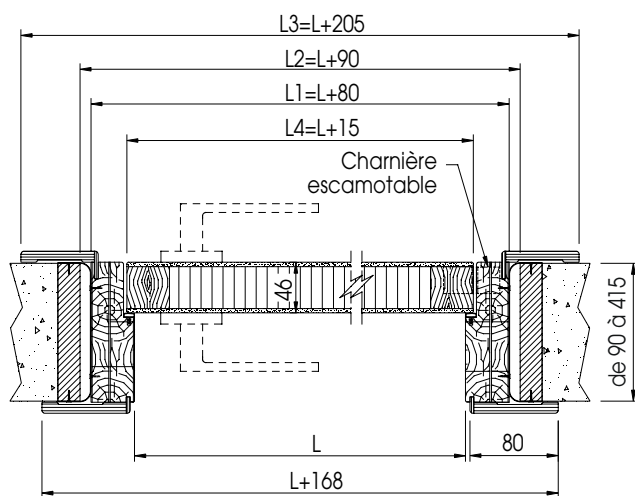
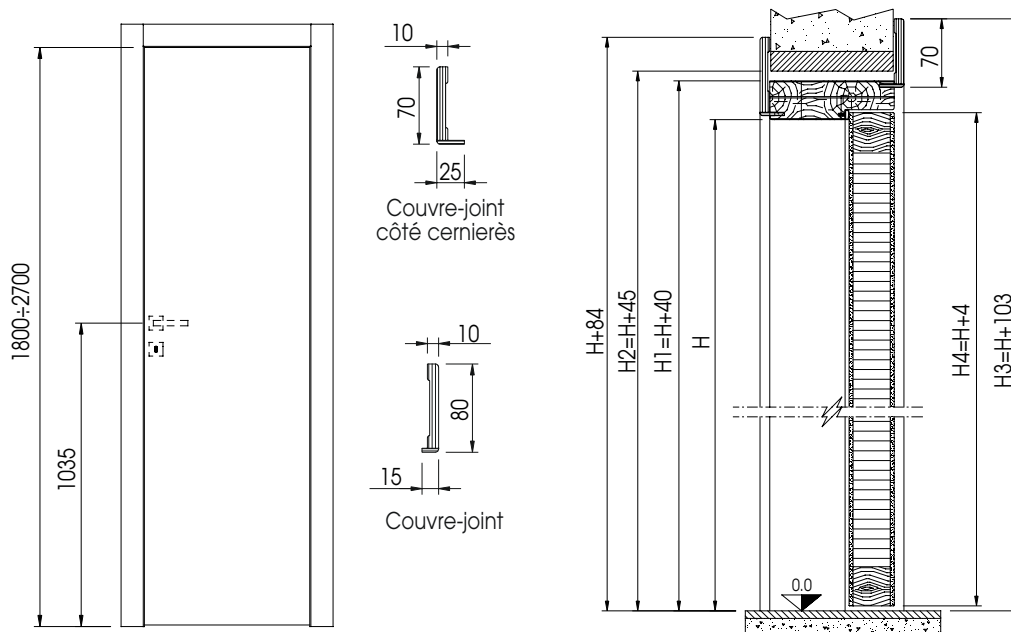
MDF

SAPIN JOINTÉ

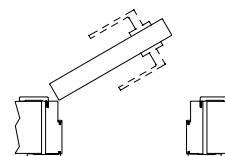
ÂME EN NID D'ABEILLES

Dimension de passage L x H	Extérieur châssis L1 x H1	Dimensions de l'ouverture L2 x H2	Encombresments couvre-joints L3 x H3	Dimension du vantail L4 x H4
600 x 1800 ÷ 2700	680 x 1840 ÷ 2740	690 x 1845 ÷ 2745	805 x 1903 ÷ 2803	635 x 1815 / 2715
700 x 1800 ÷ 2700	780 x 1840 ÷ 2740	790 x 1845 ÷ 2745	905 x 1903 ÷ 2803	735 x 1815 / 2715
800 x 1800 ÷ 2700	880 x 1840 ÷ 2740	890 x 1845 ÷ 2745	1005 x 1903 ÷ 2803	835 x 1815 / 2715
900 x 1800 ÷ 2700	980 x 1840 ÷ 2740	990 x 1845 ÷ 2745	1105 x 1903 ÷ 2803	935 x 1815 / 2715
1000 x 1800 ÷ 2700	1080 x 1840 ÷ 2740	1090 x 1845 ÷ 2745	1205 x 1903 ÷ 2803	1035 x 1815 / 2715

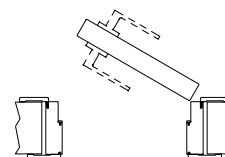
# Trésor battante avec charnière escamotable modèle Pure et Linea



Poussant gauche



Poussant droite



MDF

SAPIN JOINTÉ

ÂME EN NID D'ABEILLES

Dimension de passage L x H	Extérieur châssis L1 x H1	Dimensions de l'ouverture L2 x H2	Encombresments couvre-joints L3 x H3	Dimension du vantail L4 x H4
600 x 1800 ÷ 2700	680 x 1840 ÷ 2740	690 x 1845 ÷ 2745	805 x 1903 ÷ 2803	615 x 1804 / 2704
700 x 1800 ÷ 2700	780 x 1840 ÷ 2740	790 x 1845 ÷ 2745	905 x 1903 ÷ 2803	715 x 1804 / 2704
800 x 1800 ÷ 2700	880 x 1840 ÷ 2740	890 x 1845 ÷ 2745	1005 x 1903 ÷ 2803	815 x 1804 / 2704
900 x 1800 ÷ 2700	980 x 1840 ÷ 2740	990 x 1845 ÷ 2745	1105 x 1903 ÷ 2803	915 x 1804 / 2704
1000 x 1800 ÷ 2700	1080 x 1840 ÷ 2740	1090 x 1845 ÷ 2745	1205 x 1903 ÷ 2803	1015 x 1804 / 2704